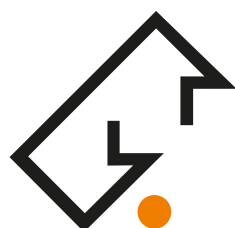


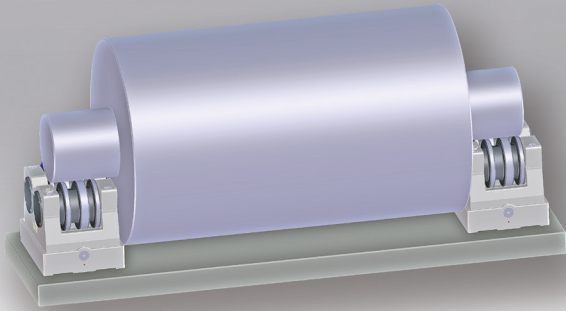
Balancing Stands **ABS**



WERKZEUGSYSTEME
MÜLLER GMBH
HOFMANN
MESS- UND TEILTECHNIK



Balancing, concentricity testing, clamping Balancing Stands ABS

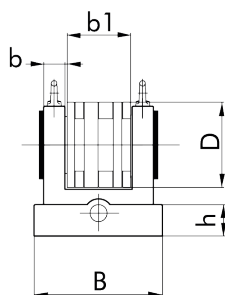
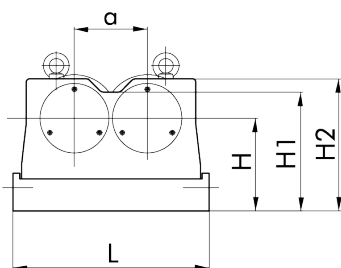


for static balancing of heavy and extremely heavy rotors, or for concentricity tests.

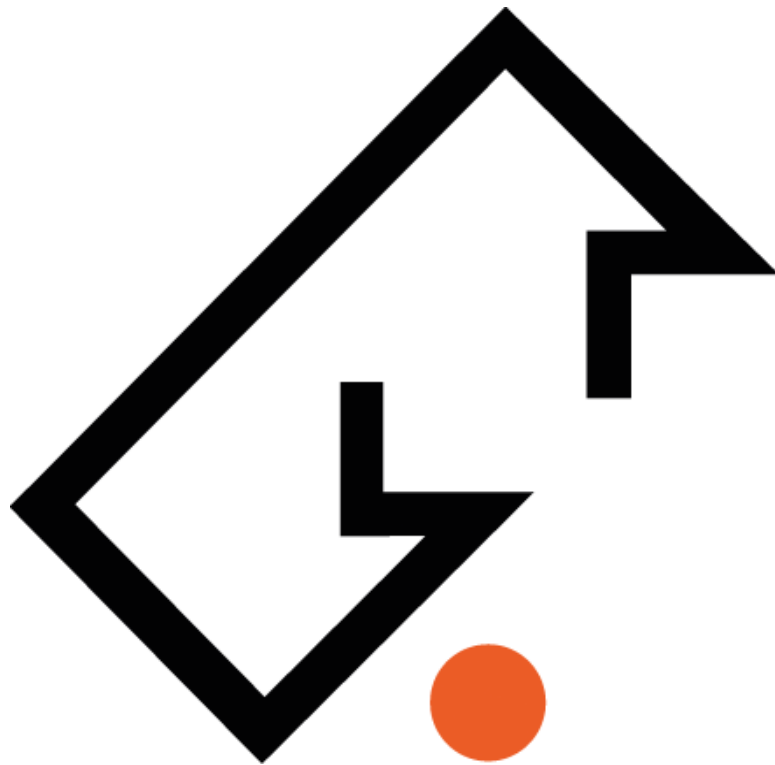
Each set of balancing stands will be supplied as a set of two individual balancing stands, each with two hardened and ground balancing rollers.

The balancing rollers are mounted in ball bearings and are arranged overlapping. Testpieces with little surface hardness can be checked by using wide balancing rollers.

Size		ABS-2	ABS-10	ABS-50
Load capacity	(kg)	80 bis 2,000	400 bis 10,000	2,000 bis 50,000
Maximum rotor diameter on rollers	(mm)	150	250	300
Concentricity	(mm)	0.01	0.01	0.01
Set weight	(kg)	66	182	580



Size		ABS-2	ABS-10	ABS-50
a	(mm)	100	126	185
b	(mm)	34	45	82
b1	(mm)	70	114	180
B	(mm)	155	225	360
D	(mm)	120	150	212
h	(mm)	40	55	100
H	(mm)	120	160	254
H1	(mm)	153	200	302
H2	(mm)	180	235	360
L	(mm)	260	340	480



**Werkzeugsysteme Müller GmbH
Hofmann Mess- und Teiltechnik**

Robert-Bosch-Straße 5 | 72124 Pliezhausen
Telefon +49 7127 97558-130 | Telefax +49 7127 97558-015
info@hofmann-mt.de | www.hofmann-mt.com