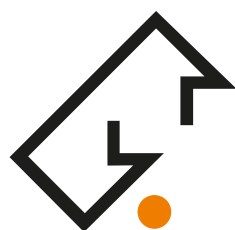


Collet Chuck Stands Z



WERKZEUGSYSTEME
MÜLLER GMBH
HOFMANN
MESS- UND TEILTECHNIK



Balancing, concentricity testing, clamping

Collet Chuck Stands Z

MAIN CHARACTERISTICS

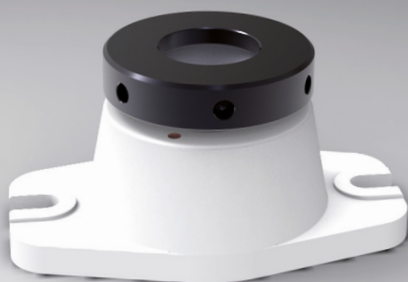
Collet chuck stands Z for fast attachment of work pieces with collet chucks. For the use on drilling and milling machines, threading cutting devices as well as for use in measuring devices.

Commercially available standard collet chucks are used for round, square or hexagonal material.

The base body of the collet chuck stands is painted in textured paint RAL 7035 light grey; the union nut and the tension lever are bronzed.

DESIGNS

- without collet chuck Spannzange
- with collet chuck
- with round collet chuck
- with square collet chuck
- with hexagonal collet chuck



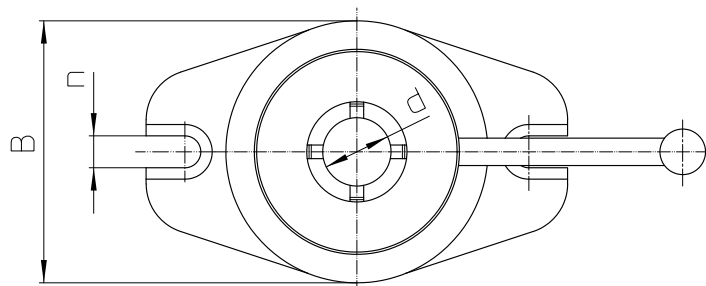
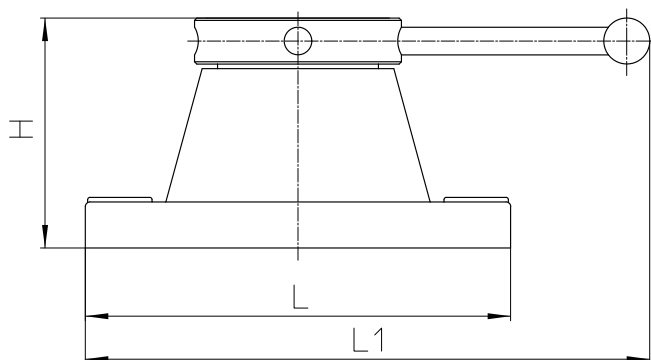
Collet Chuck Stand



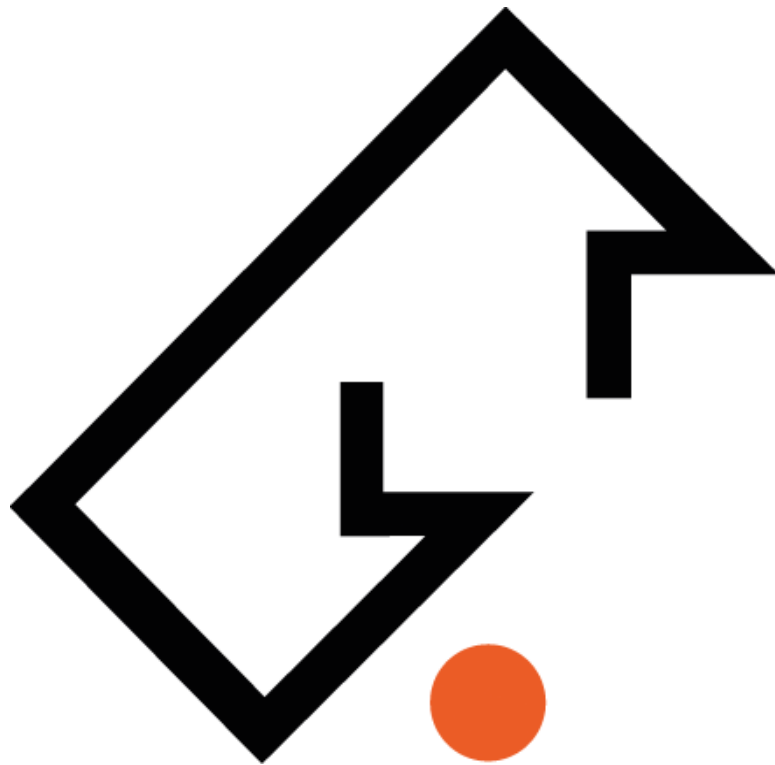
Collet Chuck Stand with clamping lever

TECHNICAL DATA

Size		Z-B	Z-D
Weight	(kg)	3.5	8.5
Type of collet chuck	(E)	161	173



Size		Z-B	Z-D
B	(mm)	96	135
d round	(mm)	2 - 26	1 - 42
d square	(mm)	5 - 18	6 - 30
d hexagonal	(mm)	4 - 22	6 - 36
H	(mm)	80	100
L	(mm)	160	210
L1	(mm)	273	347
n	(mm)	14	14



**Werkzeugsysteme Müller GmbH
Hofmann Mess- und Teiltechnik**

Robert-Bosch-Straße 5 | 72124 Pliezhausen
Telefon +49 7127 97558-130 | Telefax +49 7127 97558-015
info@hofmann-mt.de | www.hofmann-mt.com