



WERKZEUGSYSTEME
MÜLLER GMBH
HOFMANN
MESS- UND TEILTECHNIK

Robert-Bosch-Straße 5
72124 Pliezhausen

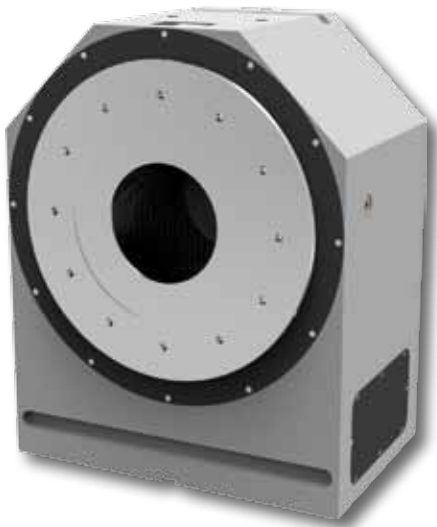
phone +49 (0)7127/973-130
fax +49 (0)7127/973-015

email info@hofmann-mt.de
web www.hofmann-mt.de

EXPANDED PRODUCT RANGE

www.hofmann-mt.de

New rotary table with direct drive: HD-350



With the new rotary table HD-350, HOFMANN's development department demonstrates its innovation strength. The result of this work is a compact and high-performance rotary table with direct drive (torque motor). It can be used anywhere where there is a demand for high dynamic and fast positioning.

With the optional available water-cooled torque motor, which can be applied according to the customer's requirements from different manufacturers, driving torques of up to 680 NM are feasible. The engine is directly connected to the dividing spindle without gear stage. This offers high revolutions per minute of the dividing spindle of up to 450 rpm over a long period of time.

Due to the elimination of the gear box the dividing units are almost free from wear and free of backlash. High precision can be achieved by the use of direct measuring systems. For that, different measuring systems can be used according to the required dividing accuracy. The spindle is extremely solid: it is mounted in a heavy-duty axial-radial-angular ball bearing. Furthermore, every rotary table is equipped with a safety clamping, which reliably holds the spindle with the workpiece in its last position in case of power loss or emergency stop.

New tailstock series

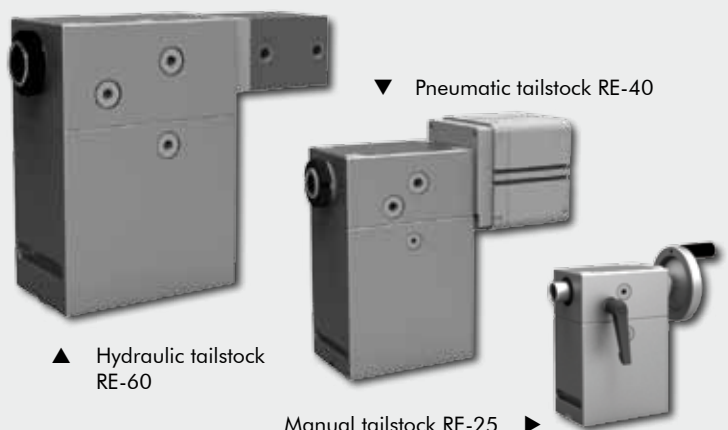
At the beginning of 2016, HOFMANN presented its new generation of tailstocks. The well-proven tailstocks were optically modified and equipped with some technical features. Therefore, they offer the following advantages.

Now, the tailstocks' lateral offset can be adjusted even more precisely and can be fitted according to the customer's requirements with minimal assistance. The lateral adjustment is integrated in the body housing and hence protected against swarf and coolant.

Another advantage is offered by the T-slots located in the tailstock base. These are uncontinuous and therefore designed as a clamping slot. A continuous bar remains at the outside, that increases the rigidity of the clamping area. This leads to less vibration.

A third improvement applies to the optical modification. The outer edges of the tailstocks' upper part and base do not have chamfers any more, but are rounded instead. The chip flow is therefore optimized and there is considerably less risk of getting injured.

HOFMANN tailstocks are specially designed for the use on machine tools together with dividing units or rotary tables. They are captivating with their long working life and high precision. HOFMANN proves one more time why the company belongs to the leading manufacturers in the field of dividing technology for more than 60 years now.



▲ Hydraulic tailstock
RE-60

▼ Pneumatic tailstock RE-40

Manual tailstock RE-25 ▶